




AUSTIN SAMUELS POWERED BY exp TM UK

@ austin.samuels@exp.uk.com

 austinsamuels.co.uk

 020 3488 5959

Winningales Court, Vienna Close, Clayhall, Essex IG5

£155,000

🛏️ 1 🚿 1 🚗 1



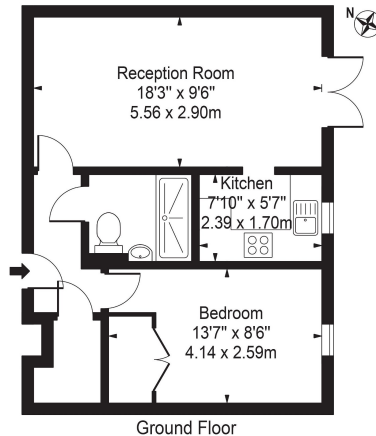
- One Bedroom Ground Floor
- Completely Refurbished Apartment
- Offered Chain Free
- Over 55s Only
- Patio & Access to Communal Gardens
- Double Bedroom with Fitted Wardrobes
- Large Shower Room
- Close to Transport
- Close to Shops & Amenities
- House Manager & Emergency Cords for Assistance



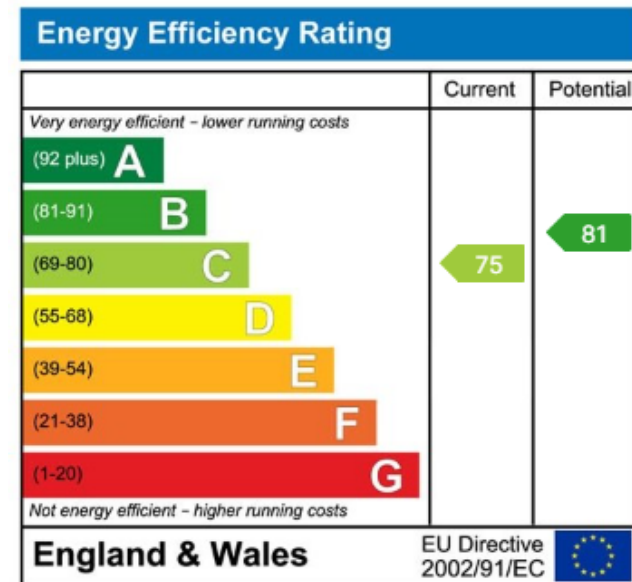
A beautiful fully refurbished ground floor flat with its own patio area and access to well maintained communal gardens. The property features new carpets and décor throughout, brand new kitchen with integrated oven, fully tiled shower room and new heating and hot water system, decent size double bedroom with fitted wardrobes and lots of storage. There is access to a communal lounge and kitchen as well as a guest bedroom for family and visitors who wish to stay, and a house manager and emergency cords for assistance.



Winningale Court Vienna Close,
Clayhall Essex, IG5 0PX
Approx. Gross Internal Area 443 Sq Ft - 41.16 Sq M



For Illustration Purposes Only - Not To Scale
This floor plan should be used as a general guide for guidance only and does not constitute in whole or in part an offer or contract. Any intending purchaser or lessee should satisfy themselves by inspection, valuation, enquiries and full survey as to the correctness of each statement. Any errors, measurements or dimensions quoted are approximate and should not be used to value a property or be the basis of any sale or let.



eXp World UK Ltd is a registered company at Level 37, 25 Canada Square, London, E14 5LQ.

Registered company number is 12016573. VAT Registration Number is 327 4120 29